

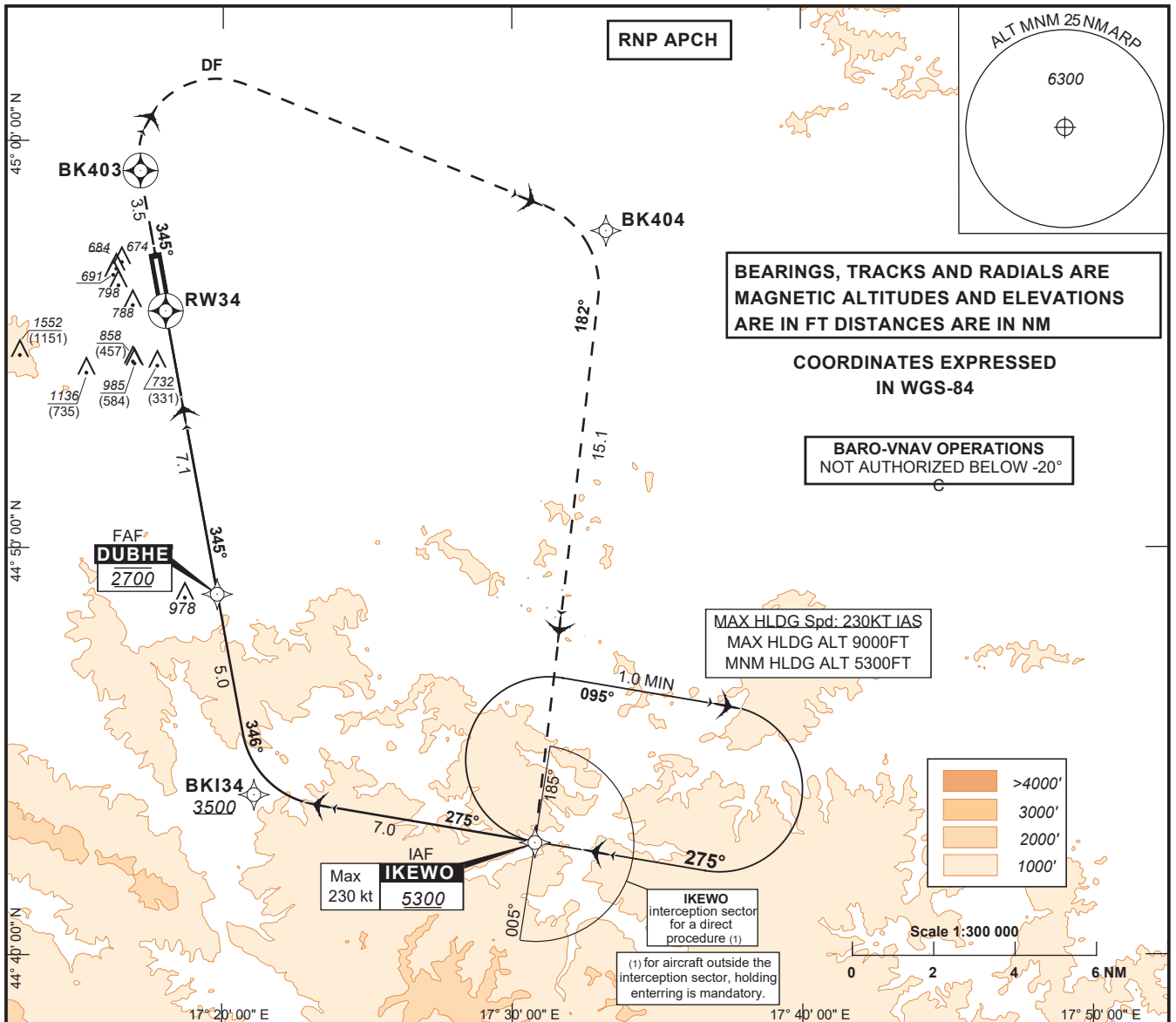
**INSTRUMENT APPROACH CHART - ICAO**

AD ELEV 401 FT  
HEIGHTS RELATED TO THR RWY34 ELEV 401FT

TRANSITION ALTITUDE 10 000FT  
VAR 5° E (2020)

TWR/APP 133.075  
SPARE 124.175

**BANJA LUKA(LQBK) RNP RWY 34**



CHG: MAG VAR, MAG BERINGS & RADIALS, RWY DESIGNATORS, WPTS RENAMED

**TA: 10 000 Missed Approach:**  
Climb to **BK403** (MT 345°), then turn **right** to **BK404**, then to **IKEWO** in climb to **5300** (4899) and join holding pattern or follow ATC instructions. MAX IAS **230Kt** until **IKEWO**.  
If unable to reach **5300** (4899) at **IKEWO**, continue climbing in the holding pattern. Following missed approach, if **5300** (4899) reached prior **IKEWO** and cleared by ATC, possible to proceed direct a new approach.



MNM AD: Vertical distances in feet, RVR and VIS in meters. REF HGT: ELEV THR

C A T	LNAV-VNAV	LNAV	Circling
	<b>OCA (H)</b>	<b>OCA (H)</b>	<b>OCA (H)</b>
A	<b>870</b> (469)	<b>980</b> (579)	<b>1160</b> (759)
B	<b>880</b> (479)		<b>1440</b> (1039)
C	<b>890</b> (489)		<b>1950</b> (1549)
D	<b>900</b> (499)		<b>1950</b> (1549)

	70 Kt	85Kt	100 Kt	115 Kt	130 Kt	145 Kt	160 Kt	185 Kt
FAF - MAPt 7.1 NM	6 min 05	5 min 01	4 min 16	3 min 42	3 min 17	2 min 56	2 min 40	2 min 18
VSP (ft/min)	370	450	530	610	690	770	850	980

## LQBK RNP RWY34 CODING TABLE

### LQBK RWY34

LQBK RNP RWY34													
<i>Proposed tabular description for navigation database coding</i>													
Serial Number	Fix	Path Descriptor	Waypoint Name	Flyover	Course °M	Course °T	Magnetic Variation (°)	Distance (NM)	Turn Direction	Altitude (ft)	Speed (kt)	VPA/RDH (°/ft)	NAV SPEC
010	IAF	IF	IKEWO	N			5.0° E			+5300	230		RNP APCH
020	IF	TF	BKI34	N	275	279.7	5.0° E	7.0		+3500			RNP APCH
030	FAF	TF	DUBHE	N	345	349.6	5.0° E	5.0		@2700			RNP APCH
040	MAPT	TF	RW34	Y	345	349.5	5.0° E	7.1		@451		-3°/49	RNP APCH
050		TF	BK403	Y	345	349.5	5.0° E	3.5					RNP APCH
060		DF	BK404	N			5.0° E		R				RNP APCH
070		TF	IKEWO	N	182	186.7	5.0° E	15.1		@5300	230		RNP APCH

LQBK IKEWO RNAV HOLDING												
<i>Proposed tabular description for navigation database coding</i>												
Leg Sequence	Path Descriptor	Waypoint Name	Flyover	Course °M	Course °T	Magnetic Variation (°)	Leg time	Turn Direction	Altitude (ft)	Speed (kt)	NAV SPEC	
HLDG	HM	IKEWO	Y	275	279.7	5.0° E	T 1 min	R	+5300	230	RNP APCH	

### List of waypoints :

Waypoint coordinates		
Waypoint Name	WGS-84 Latitude	WGS-84 Longitude
IKEWO	444247.4600 N	0173046.8970 E
BK403	445915.6700 N	0171707.4490 E
BK404	445748.2680 N	0173315.3290 E
DUBHE	444852.4540 N	0171949.6320 E
BKI34	444357.4550 N	0172106.0560 E
RW34	445549.2000 N	0171801.2900 E